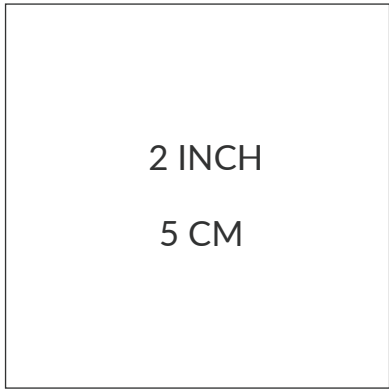


1



# 2

## PRINTING + LAYOUT:

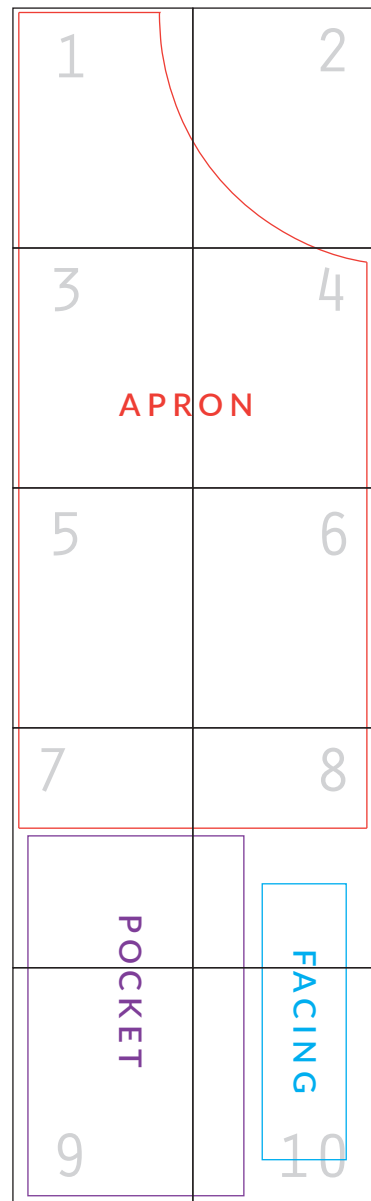
- Pages print to standard 8 1/2" x 11" or A4 paper.
- Print in grayscale or color.
- Print with a "do not scale" setting so the image size is not affected. Pages should print at 100%. Do not enlarge or "shrink to fit".
- After printing, use a ruler to measure against the 2-inch (5 cm) square marker. If your ruler doesn't match up, adjust your printer settings.
- Trim the 10 pages at the border edges and piece/tape them together according to the layout on the right.

### FOR HELP WITH PRINTING + PIECING....

Watch my detailed video!

**VIDEO: HOW TO USE PDF PATTERNS:**

<https://youtu.be/aMZCGpKcpss>



3

# EASY APRON

#MADEEVERYDAYPATTERNS



MADEEVERYDAY.COM

@MADE\_EVERYDAY

YOUTUBE.COM/C/MADEEVERYDAY

© DANA MADE INC. 2024

## Cutting Instructions:

- Cut (1) Apron piece, on the Fold
- Cut (2) Pockets 15" x 9" (38 cm x 23 cm)
- Cut (1) Facing 11 1/2" x 3 1/2" (29 1/2 cm x 9 cm)
- Cut (3) strips 2 1/2" x WOF, appx 42" (6 1/2 cm x 1M)  
Subcut (2) of the strips to 2 1/2" x 40" (6 1/2 cm x 1M)  
Subcut (1) strip to 2 1/2" x 22" (6 1/2 cm x 56 cm)

FOLD

A

4

B

5



6

# EASY APRON

#MADEEVERYDAYPATTERNS



MADEEVERYDAY.COM

@MADE\_EVERYDAY

YOUTUBE.COM/C/MADEEVERYDAY

© DANA MADE INC. 2024





# EASY APRON

#MADEEVERYDAYPATTERNS



MADEEVERYDAY.COM

@MADE\_EVERYDAY

YOUTUBE.COM/C/MADEEVERYDAY

© DANA MADE INC. 2024



# POCKET

15" X 9"

(38 cm X 23 cm)

CUT 2

6

# FACING

11 1/2" X 3 1/2"  
(29 1/2 cm X 9 cm)

CUT 1

10  
11