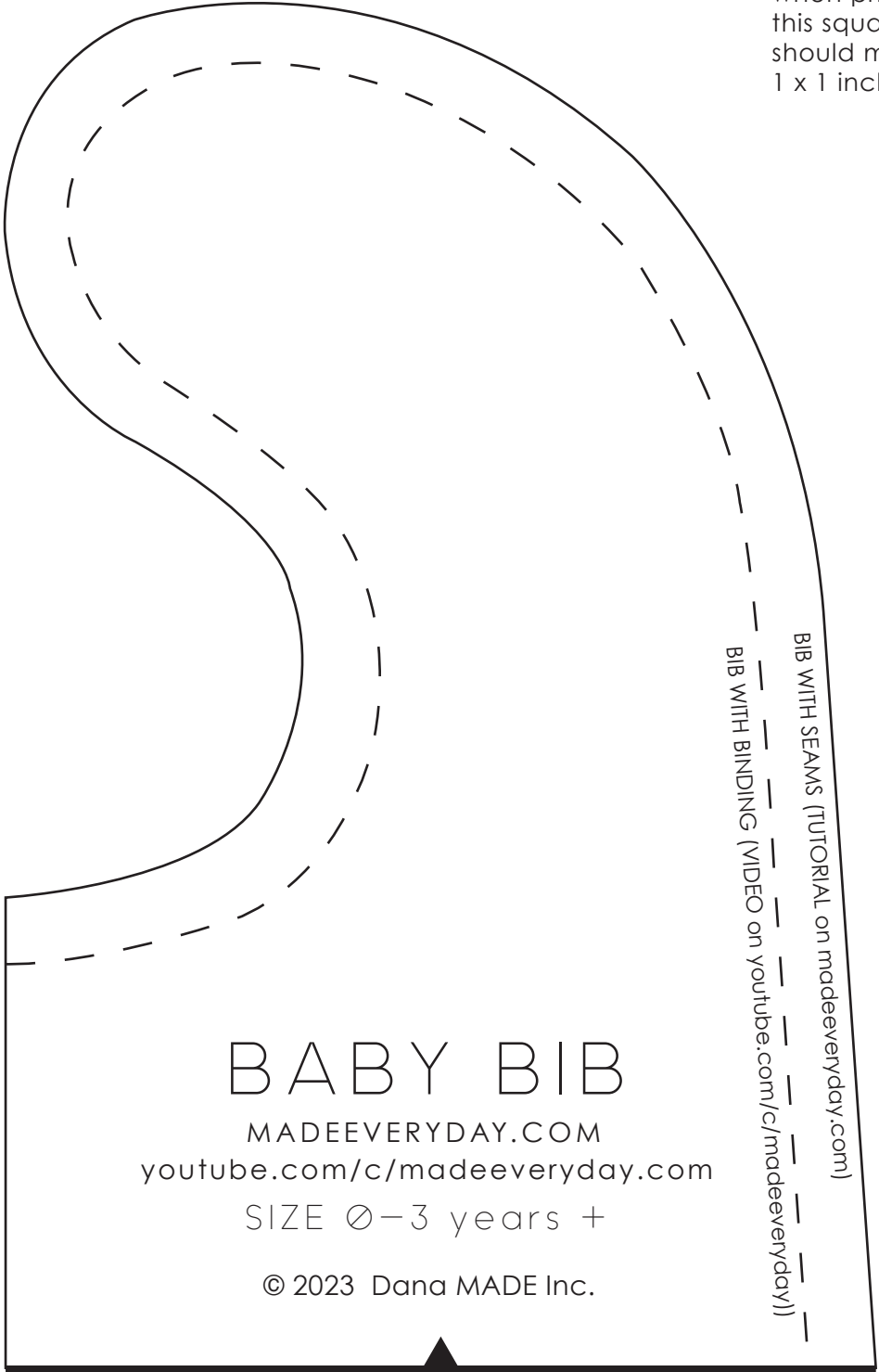


1 CM

1 SQUARE
INCH

when printed,
this square
should measure
1 x 1 inch



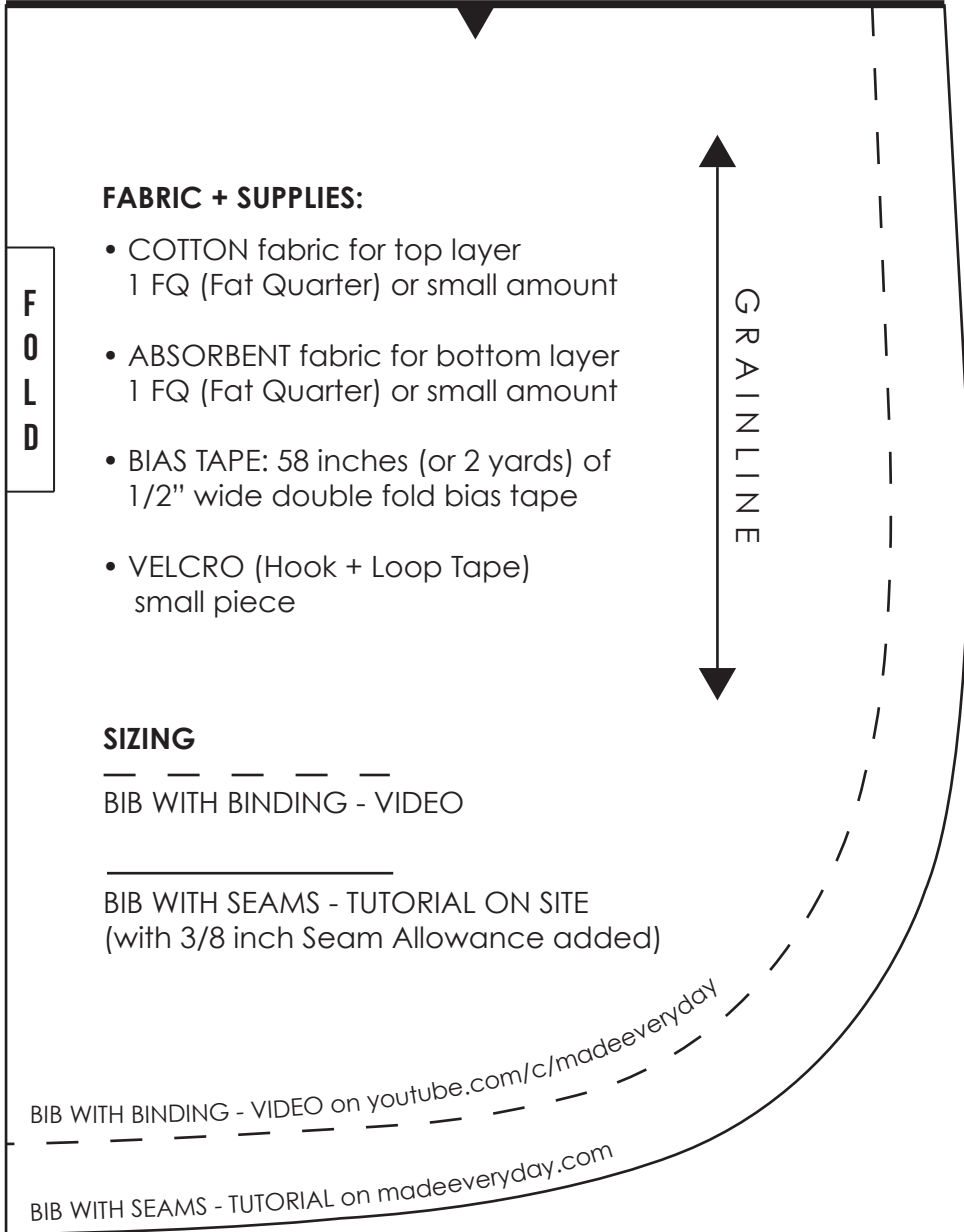
BABY BIB

MADEEVERYDAY.COM
youtube.com/c/madeeveryday.com

SIZE Ø-3 years +

© 2023 Dana MADE Inc.

BIB WITH SEAMS (TUTORIAL on madeeveryday.com)
BIB WITH BINDING (VIDEO on youtube.com/c/madeeveryday.com)



FABRIC + SUPPLIES:

- COTTON fabric for top layer
1 FQ (Fat Quarter) or small amount
- ABSORBENT fabric for bottom layer
1 FQ (Fat Quarter) or small amount
- BIAS TAPE: 58 inches (or 2 yards) of
1/2" wide double fold bias tape
- VELCRO (Hook + Loop Tape)
small piece

F
O
L
D

GRAINLINE

SIZING

— — — — —
BIB WITH BINDING - VIDEO

—————
BIB WITH SEAMS - TUTORIAL ON SITE
(with 3/8 inch Seam Allowance added)

BIB WITH BINDING - VIDEO on youtube.com/c/madeeveryday

BIB WITH SEAMS - TUTORIAL on madeeveryday.com