

Bunny Pal

DESIGNER: CATHY GAUBERT

This little guy wants to hop right up on your table and sit awhile.



WHAT YOU NEED

Templates (page 116)

Basic sewing kit (page 9)

Brown felt, 12 x 12 inches
(30.5 x 30.5 cm)

Scraps of pink, black, yellow,
lavender, and aqua felt

White felt, 3 x 6 inches (7.6 x 15.2 cm)

Pink, black, yellow, lavender,
and aqua embroidery floss

Brown thread

Stuffing

Black embroidery floss

Embroidery floss to match
the egg's dots

Extra long needle

Heavy brown thread

Cream-colored heavy thread
or carpet thread (for whiskers)

Wool yarn (for tail)

Pom-pom maker (optional)

White thread

WHAT YOU DO

(to make the bunny)

1 Use the template to cut out six head pieces, and two each of the body, ear, arm, and leg pieces. Place two head pieces together, and begin stitching at the top point all the way to the bottom (the neck), leaving the bottom open. Add the next piece, again matching the top points and then stitching top to bottom. Put this section aside.

2 Stitch the remaining three pieces together in the same manner. You'll now have two sections (the front and the back of the head).

3 Place one ear piece on top of a piece of brown felt, and stitch about 1/8 inch (3 mm) in from the edge. Repeat with the second ear. Cut out both double ear shapes.

4 With right sides facing, pin the ears to the front of the head (about 1/2 inch [1.3 cm] in from either side of the point where all three head pieces meet at the top), basting in place.



5 With right sides still facing, match that same top point on both head sections (making sure the ears are tucked inside the head and out of needle's reach), and then stitch, beginning at the top point, down one side to the neck opening.

Turn the head and stitch the other side in the same manner. (You'll be going through quite a few layers, so go slowly and carefully.) Gently turn the head right side out.

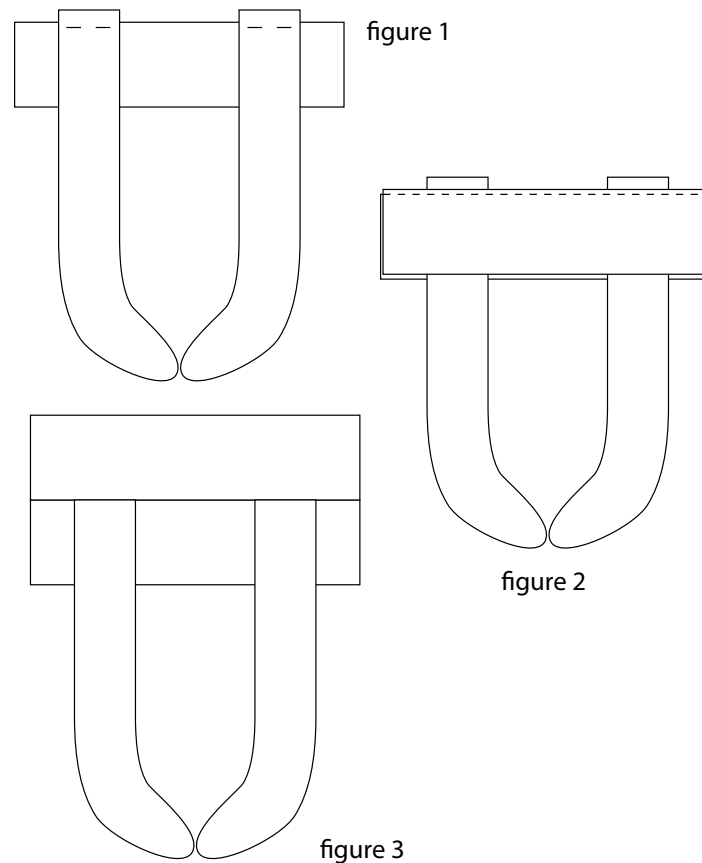
6 Now for the face! Cut out two pink and two black felt circles for the eyes. Place one black circle onto one pink for each eye. Referring to the photos for placement, pin each eye to the bunny's head. Using six strands of the black floss, attach each eye by going in through the head opening, coming up through the pupil of one of the eyes and then back down through that pupil to attach the eye to the head.

7 The nose is essentially a stitched Y with a long stem. Mark the four points of the Y on the felt with pins for placement. Using six strands of the pink floss, go in through the neck opening and come out at the top right side of the Y. Run the floss under the center pin, and then go back in through the top left side of the Y. Come up through the very bottom point on the Y, and loop the floss around the strands that are under the pin in the center. Pull the floss taut, and go back in at the same point at the bottom of the Y. Tie off inside the head and then stuff the head firmly.

8 Next, make the arms and legs in the same manner as the ears. Be sure to lay the limbs onto the felt facing opposite directions or you'll end up with two left feet (and arms!). Refer to the marks on the template, and place the arms on the body and baste in place.

9 Pin the body pieces right sides together. Using a 1/4-inch (6 mm) seam allowance, begin at point A and stitch around the body, ending at point B (leave the bottom open). Turn right side out, partially stuff the body, and set aside.

10 Cut two 3 x 3/4-inch (7.6 x 1.9 cm) strips from the brown felt for the bunny's bottom. Baste the legs to one of the strips about 1/2 inch (1.3 cm) in from either side, making sure the feet are facing each other (figure 1). Place the second felt strip on top with the legs sandwiched in between. Using 1/4-inch (6 mm) seam allowance, stitch straight across the top long side of the rectangles, catching the top of the legs in the seam (figure 2). Lift the top layer of felt and you'll have a 3 x 1 1/2-inch (7.6 x 3.8 cm) bunny bottom with legs (figure 3).



11 Find the middle of the bunny's front and the middle of the bottom piece you sewed in the last step, line up, and pin together. Match the side seams on the body with the middle seam of the bottom piece, pin the bottom to the body, and begin hand stitching to attach the bottom and its legs to the body. When you have about 1 1/2 to 2 inches (3.8 to 5.1 cm) left to stitch, add more stuffing until the body is very firmly packed. Finish stitching to close the bottom. Set aside.

12 Use a 30-inch (76.2 cm) length of the heavy brown thread and the running stitch to slightly close the bottom of the head. Be sure to leave a space for the neck to fit—if your thumb fits in, that should be the right amount of space. It's important that you don't snip the thread yet! You'll use the remaining length to attach the head to the body.

13 Thread the extra long needle using the thread still attached to the head. Place the head onto the neck and stitch back and forth through the head and neck to attach the head securely to the body. If it seems wobbly, go back around one more time with your stitching. Knot the thread and pull it through the body to sink the knot. Snip the thread.

14 Honestly, the easiest way to make a pompom for the tail is to buy a pompom maker from a craft store and follow the manufacturer's directions. These simple gadgets cost little and will change your life when it comes to pompom-hood. To make one the old fashioned way, wrap about 20 yards (18.3 m) of wool yarn around the four fingers of one hand lots and lots of times. Gently ease the yarn off your fingers, and wrap a 20-inch (50.8 cm) length of thread around the middle of the loops, pulling tightly to gather up the yarn, before tying it off. Snip the loops on either side. Fluff up the yarn and trim any stray pieces. Hand stitch it to the bunny's backside using the attached thread.

15 To add whiskers to each side of the bunny's head, thread your needle with a double strand of the cream-colored heavy thread or carpet thread, make a tiny stitch on one side of the face, and then knot the four strands of thread tight against the head. Trim the whiskers to match. Repeat on the other side of the head.



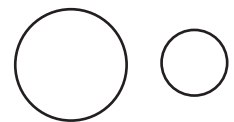
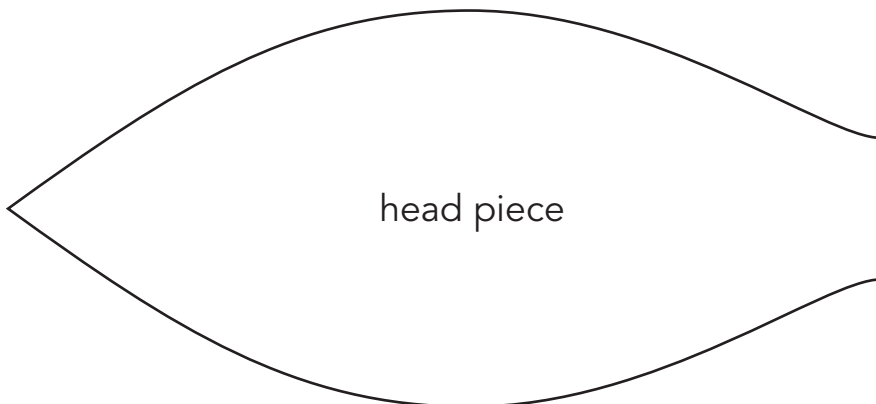
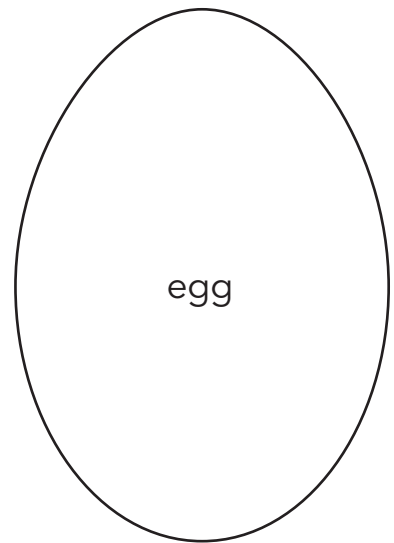
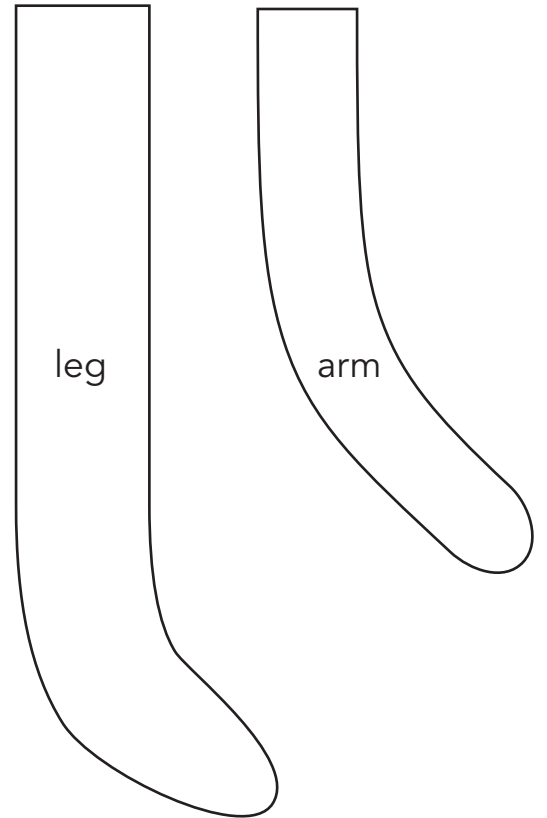
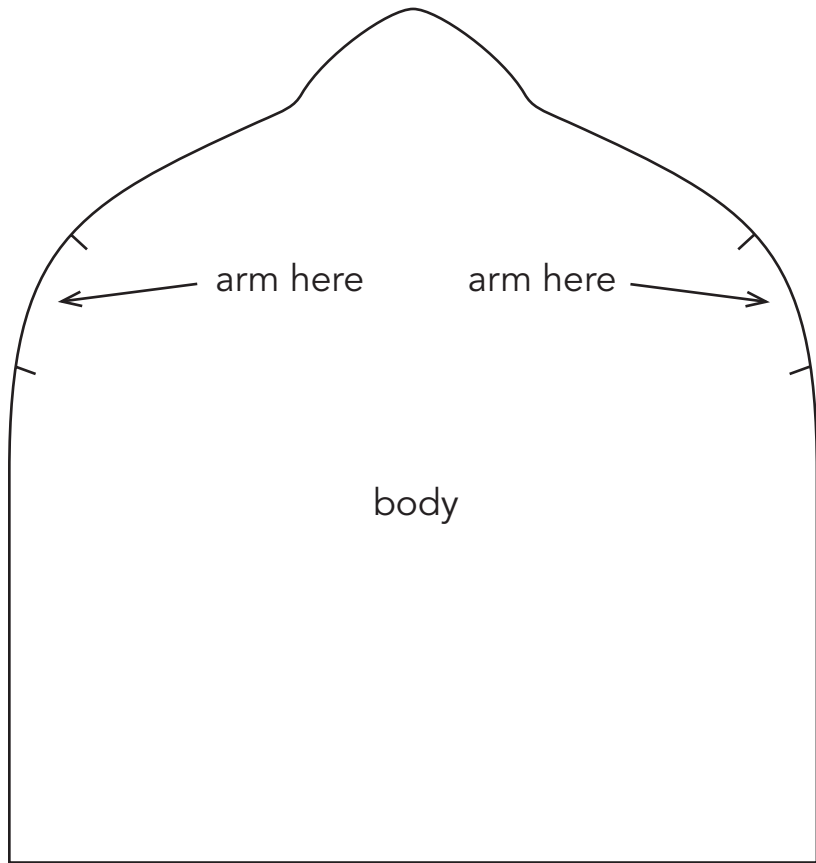
(to make the egg)

1 Cut two egg pieces out of white felt. Stitch these right sides together with the white thread, leaving an opening for turning and stuffing. Turn right side out, stuff firmly, and stitch closed. Cut out small and medium circles from the yellow, lavender, and aqua felt scraps (you can use the two eye templates for these circles). Attach these to the egg with matching floss, using a simple X stitch, and hiding the knots under the circles.

2 Join the bunny's arms together to hold the egg by overlapping the ends of the arms and taking one or two stitches to secure. Now you can slip the egg into the bunny's arms. Ah, happy bunny!

Bunny Pal

print at 100%



eye pupil

(also use for egg dots)